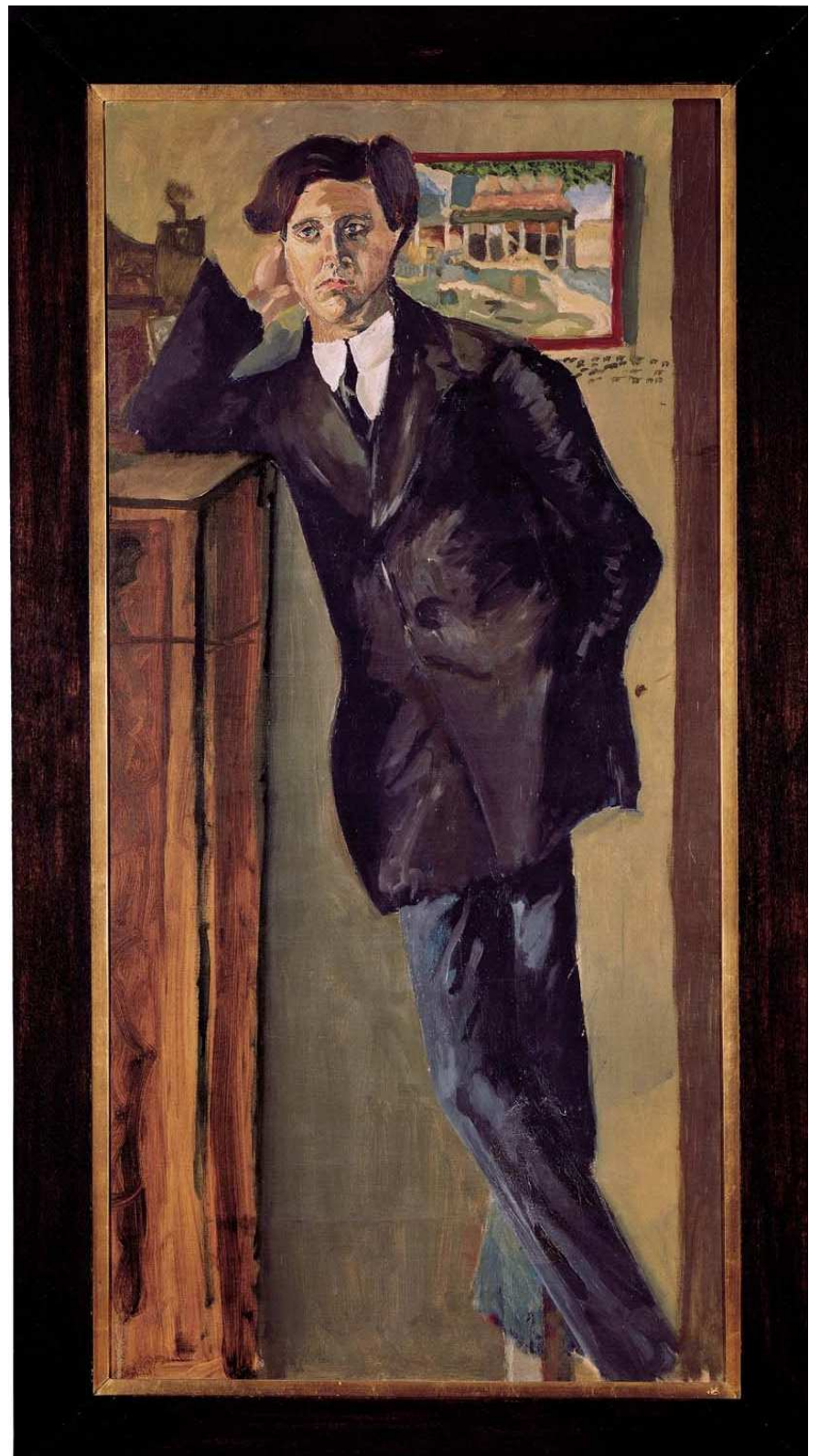


Bratschen



**Alban Berg**

## **Sieben Frühe Lieder**

auf Texten von Hauptmann, Lenau, Storm, Rilke,  
Schlaf, Hartleben und Hohenberg

# I. Nacht (Carl Hauptmann)

*Sehr langsam* (♩ = ca. 48)

Violoncelli *pizz. get. pp* *II. Geigen* *get. pizz. pp*

Geteilt

Alle *arco get. p* Alle *arco get. p*

*rit. a tempo*

8 *pp poco cresc. poco f pp*

*rit. (molto) a tempo poco rit.*

11 *pizz. poco f arco p pp mf p*

*a tempo rall. a tempo*

16 *mp* *nehmen Dpf.* *pp*

*rit. - - Etwas langsamer*

*Ganz breit*

*quasi a tempo*

21

*Wie zu Anfang*

26

*Etwas zunehmend*

*Zeit lassen*

*Wieder abnehmend*

31

*quasi Tempo I.*

35

## II. Schilflied (Nikolaus Lenau)

**Mäßig bewegt** (♩ = ca. 108)

ohne Dpf.

Solo-Violoncello

1. Solo

*rit.* . . . **A tempo (II) aber etwas langsamer**

(♩ = ca. 96)

am Steg

gewöhnlich

7

13

**tranquillo**

16

nimmt Dpf.

*rit.* . . .

20

(molto) . . . **a tempo (II)**

26

## III. Die Nachtigall (Theodor Sturm)

*Zart bewegt* (♩ = ca.96)*etwas zögernd*

ohne Dpf.  
Geteilt mit Dpf.

*a tempo e poco a poco cresc.**allargando*

7  
o.Dpf.  
m.Dpf.

*Etwas langsamer* (♩ = ca.84)

13  
o.Dpf.  
m.Dpf.

1.H. hievon  
1.Solo (o.D.)*più p, ma poco a poco cresc.*

19  
o.Dpf.  
m.Dpf.

*mf accel. ----- Tempo I ----- etwas zögernd*

25 *1.H. (Alle)*

o.Dpf. *mf espr. p pp p espr.*

m.Dpf. *pp pp*

*a tempo e poco a poco cresc.*

30

o.Dpf. *p espr. p espr.*

m.Dpf. *(pp) p pp mp*

*allargando*

35

o.Dpf. *mf non espr. poco f espr. marc. f espr.*

m.Dpf. *poco f poco f espr. mf*

*a tempo*

*poco rit. ----- Tempo*

40

o.Dpf. *(p) pizz. mf arco mf p pp*

m.Dpf. *> p (dolce) mf mf p p*

### IV. Traumgekrönt (Rainer Maria Rilke)

**Langsam** (♩ = ca.46)

*poco accel.*

II. Geigen  
Geteilt

mit Dpf. get. zus. ppp p espr.

*rit.* (molto) *a tempo*

7 Violoncelli

poco f pp non espr. pp poco espr.

*poco accel.*

*poco rit.*

*a.*

12

*tempo*

*poco accel.*

*rit. (molto)*

16 get. Alle 2

pp p pp p

*a tempo*

*poco accel.*

23 pp non espr. pp poco cresc.

*rit.* (molto) *a tempo*

27 pp p dim. 3 ppp

### V. Im Zimmer (Johannes Schlaf) — TACET

Musical score for 'Im Zimmer' (Johannes Schlaf) — TACET. The score is for a string quartet. It begins with a 3/4 time signature and a key signature of one flat. The first staff shows measures 1-4 with a 4-measure rest, followed by a 2-measure rest, and then a 3-measure rest. The second staff starts at measure 17 and features a melodic line with dynamics *pp*, *p*, *p*, and *pp*. It includes performance instructions for Oboe (*Oboe*), Horn (*1. Hrn.*), and Double Bass (*(m. Dpf.)*). The piece concludes with a double bar line.

### VI. Liebesode (Otto Erich Hartleben)

*Sehr langsam* (♩ = ca. 46) *rit.*, *a tempo*

Musical score for 'Liebesode' (Otto Erich Hartleben). The score is in 3/4 time with a key signature of two sharps. It begins with performance instructions: *mit Dpf.*, *sul C.*, *Dpf. ab*, and *pizz.*. The first staff (measures 1-7) includes dynamics *p* and *p*, and features triplets and a *get.* (grace note) instruction. The second staff (measures 8-12) includes dynamics *(p)*, *poco cresc.*, and *poco rit.*. The third staff (measures 13-16) includes dynamics *pp*, *p*, *mp*, and *mf*. The fourth staff (measures 17-20) includes dynamics *p*, *mp*, and *mf*. The fifth staff (measures 21-24) includes dynamics *f*, *ff*, *f*, and *p*. The score concludes with a double bar line.



## VII. Sommertage (Paul Hohenberg)

*Schwungvoll* (♩ = ca. 60)

ohne Dpf.

Geteilt

Vcl., Kb. 8

*p* *mf* *cresc.* *fp* *p* *dolce espr.*

*arco* *get.* *zus.*

*rit.* *a tempo*

7 *pizz.* *p* *pp* (leicht)

*p* *espr.* *pp* *poco a poco accel.*

13 *sempre pp* *cresc.*

*allargando*

16 *get.* *zus.* *f*

*poco pesante* *a tempo*

20 *pizz.* *arco* *ff* *p*

*rit.* *a tempo, ma molto rubato* *Tempo I*  
(*rit. accel. rit. accel. rit.*)

25 *pp* *molto* *(N.B. die 4 Quinten:)* *mp* *p*  
*poco mf mp p* (*espr.*)

*poco accel.* *allargando*

31 *cresc.*

*a tempo*

35 *ff* *f* *espr.* *ff* *senza dim.*