

THAT'S WHY I LOVE HER

HUMOROUS SONG

Photo by
Dobson
Liverpool.

Written and Composed
by **KENNETH
AND
GEORGE WESTERN.**

Sung by
**NORMAN
LONG.**



Copyright 1929, by
Francis, Day
& Hunter Ltd

London: **FRANCIS, DAY & HUNTER LTD,**
138-140, CHARING CROSS ROAD, W.C.2.

NEW YORK AGENTS: LEO FEIST, Inc., 231-5, WEST 40TH STREET.

SYDNEY AGENTS: J. ALBERT & SON, 137-139, KING STREET.

PARIS AGENTS: PUBLICATIONS, FRANCIS-DAYS, A. 30, RUE DE L'ECHIQUIER.

BERLIN AGENTS: FRANCIS, DAY & HUNTER G. mb H. LEIPZIGER-STR 37, W.8.

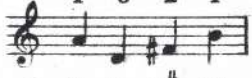
PRINTED IN ENGLAND.

2/-
NET.

THAT'S WHY I LOVE HER.

Tune Ukulele

4 3 2 1



A D F# B

Written and Composed by
KENNETH and GEORGE WESTERN.

Moderato (smoothly)

PIANO.

f

KEY D. ||| s :- | d :-

1. I know
2. She's just

mf *p*

||| d .t : l .s | :- d :- | r .d : r

some - bod - y who_ I'll nev - er for -
dream - ing of me_ each morn - ing and

d :- | - : | s :- | d' :- | t .l :s .r | - : |

get, night, She's been tender and true—
 I'm just dream-ing of her,—

This system includes guitar chords and piano accompaniment. The guitar part features chords for D, D major, F major, and D major. The piano accompaniment consists of a treble and bass staff with chords and melodic lines.

OPEN.
 m :- | l :- | s :- | - : | l : d' | d' : l

since we met; She's as sweet as
 that seems right; No time now for

This system includes guitar chords and piano accompaniment. The guitar part features chords for m, l, s, l, d', and l. The piano accompaniment consists of a treble and bass staff with chords and melodic lines.

s .t :- | t : | f : l | l : s | m .d :- | s :-

sug - ar__ cane, She's all lumps, but I'll ex - plain!
 sport I__ get, I've just pawned my Lu - do__ set!

This system includes guitar chords and piano accompaniment. The guitar part features chords for s, t, t, f, l, l, s, m, d, and s. The piano accompaniment consists of a treble and bass staff with chords and melodic lines.

REFRAIN

She's got a blush like the rose on the stem,
 She lets me kiss her down in the dell,
 She al - ways brings me won - der - ful luck,
 She's got a form that Eve could - nt beat,
 She's got a smile that's sweet - er than plums,

That's why I love her! She works at Boots and
 That's why I love her! She lets me kiss her
 That's why I love her! Looks like a bird but
 That's why I love her! The near - er the bone the
 That's why I love her! She's got no teeth but

gets it from them, That's why I love her!
 sis - ter as well, That's why I love her!
 walks like a duck, That's why I love her!
 sweet - er the meat, That's why I love her!
 won - der - ful gums, That's why I love her!

She's got blue eyes, just like the sea, She's got two eyes that
 She al - ways wants to have a lark, Then takes me spoon - ing
 She's got a mouth just like an elf, It's not a mouth it's
 She's al - ways in my car at night, She's got a nose that
 She does - n't live in mar - ble halls, With lots of knick - knacks

don't a - gree, But now and then one looks at me,
 aft - er dark, She ev - en takes me in Hyde Park,
 like a shelf, She sings du - ets all by her - self,
 shines so bright, That I nev - er need a red rear - light,
 round the walls, She's got a house with three brass balls,

That's why I love her!
 That's why I love her!
 That's why I love her!
 That's why I love her!
 That's why I love her!

D.C.