

Violin II

# Organ Sonata No. 2

## I.

Hindemith/Johnson

Lebhaft [ $\text{♩}=92$ ]

*f*

8

*mf* *p*

16

21

*f*

27

*mf*

34

*p*

41

46

13

## Violin II

63

*pp*

68

*mf* *f*

76

*p*

83

*p*

89

*p*

97

*mf* *f*

103

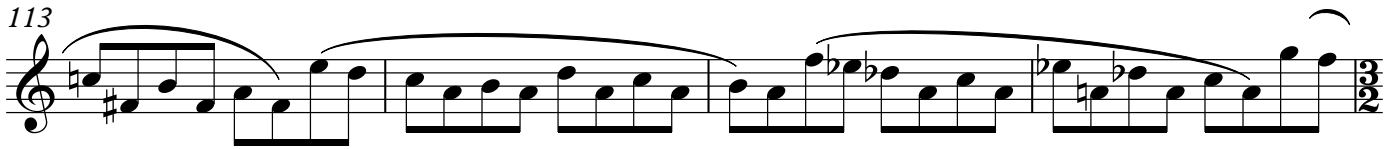
*mf*

109

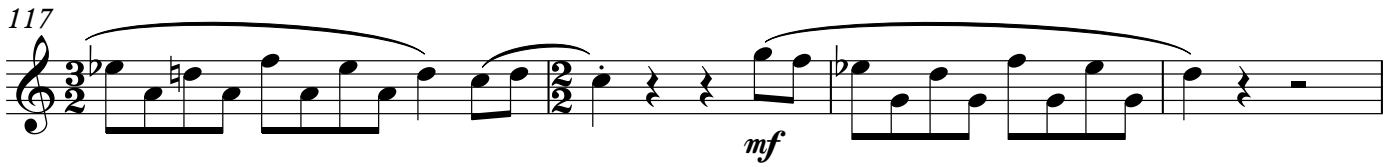
*mf*

Violin II

113



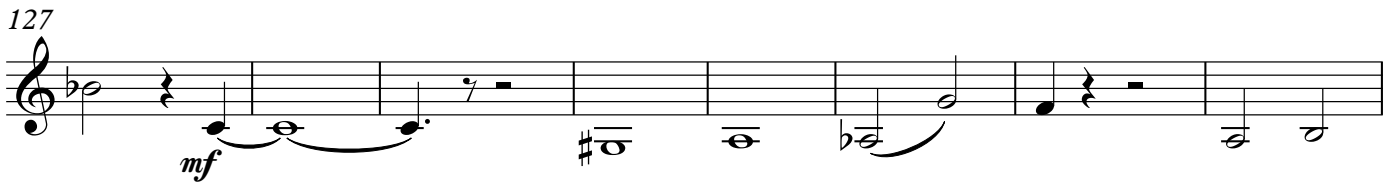
117



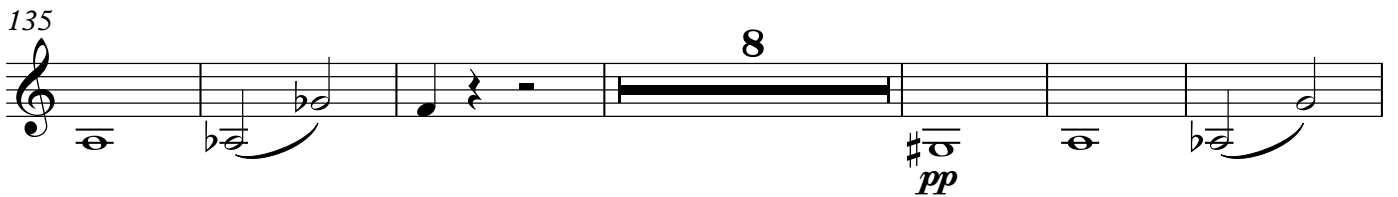
121



127



135



149



157



161



167

*p*

172

177

*f*

183 **wenig verbreitern**

II

185 **Ruhig bewegt** (♩.=bis 50)

6 2

*mf*

197

204

17

*mf*

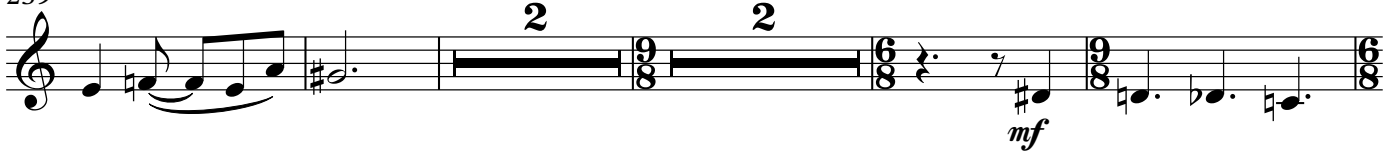
227

234



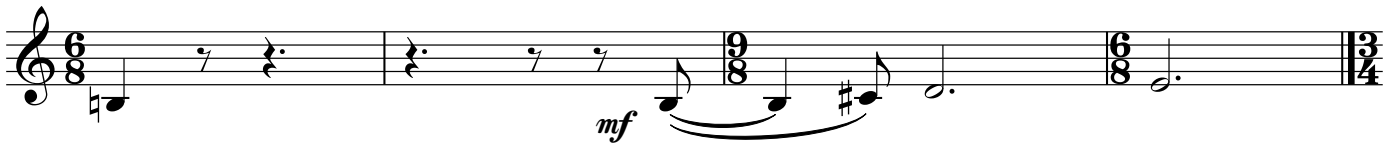
239

Langsamer



247

Noch langsamer



III

251

Fuge: Massig bewegt, heiter (♩=100)



264



271



281



284



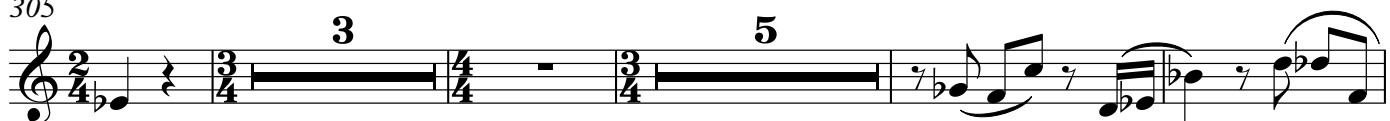
291



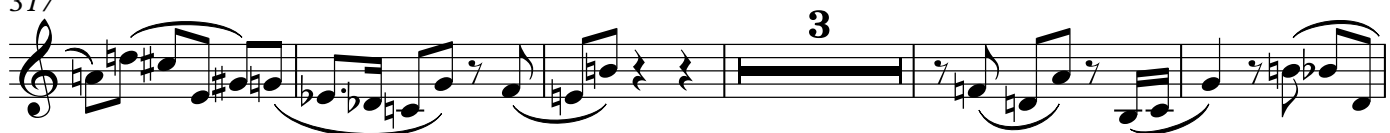
298



305



317



325



331



338

