

"CORTEGES"

Basses

FANTASY OVERTURE
FOR ORCHESTRA

ALAN RAWSTHORNE

Allegro molto vivace

Handwritten musical score for Basses, featuring various tempo markings (Allegro molto vivace, Adagio, Tempo I), dynamics (ff, ffz, p, pp, mf, f), and performance instructions (arco, pizz). The score includes several systems of music with notes, rests, and dynamic markings.

v. s.

Musical score for the first system, consisting of five staves of music. The notation includes various dynamics such as *p*, *pp*, *sf*, *ff*, *f*, and *mp*. Articulations include *cresc.*, *arco*, and *pizz.*. The music features complex rhythmic patterns and melodic lines.

Allegro molto vivace

Musical staff with a circled 'E' and the marking 'vlas'. The staff contains a series of rhythmic figures, possibly a tremolo or a fast sixteenth-note pattern.

Musical staff with a circled 'E' and the marking 'Picc'. The staff contains a series of rhythmic figures, similar to the previous staff, but with a different articulation.

Musical staff with a dynamic marking of *f*. The staff contains a series of rhythmic figures.

Musical staff with a circled 'G' and a dynamic marking of *p*. The staff contains a series of rhythmic figures.

Musical staff with a dynamic marking of *f*. The staff contains a series of rhythmic figures.

p subito *cresce*

f

H *Sempre f*

p *f*

J *ff*

fff

Adagio

K *Allegro molto vivace.*

L 24

L

M

M

Handwritten musical notation on a single staff, starting with a dynamic marking of *f*.

Handwritten musical notation on a single staff, ending with the instruction *sempre f*.

Handwritten musical notation on a single staff, featuring a *cresc.* marking and a circled 'N' with a *ff* dynamic marking.

Handwritten musical notation on a single staff.

Handwritten musical notation on a single staff.

Handwritten musical notation on a single staff, including a circled 'O' and a *Mf* dynamic marking.

Handwritten musical notation on a single staff, labeled *cellos* and marked with a circled 'P', *f*, and *p*.

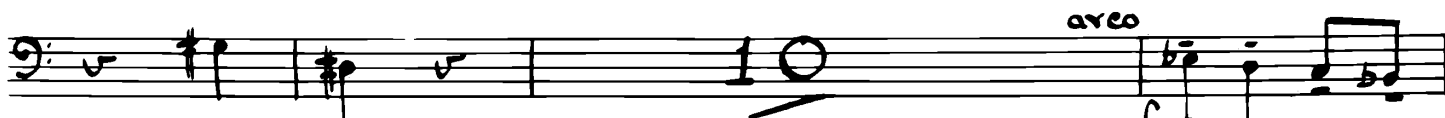
Handwritten musical notation on a single staff, labeled *cellos.* and marked with a circled 'Q' and *pizz*.

Handwritten musical notation on a single staff.

Handwritten musical notation on a single staff.

Handwritten musical notation on a single staff.

Handwritten musical notation on a single staff, including *arco*, *cresc.*, *f*, *pizz*, and a circled 'R'.



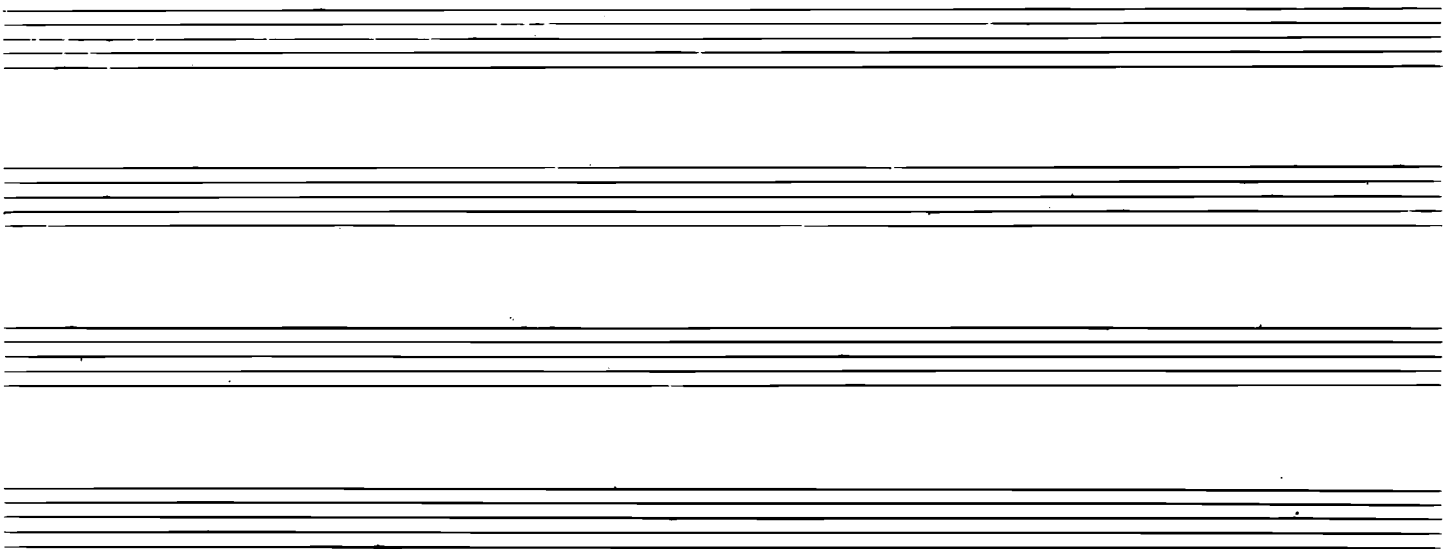
⑤ VIOLIN SOLO



①



V. S.



mp espress

Ⓟ

p

pizz

arco
mp.

Ⓜ

pizz

dim

ⓧ
1st Vlns.

arco
ff

pizz
p
pp
Adagio.
ff

Y