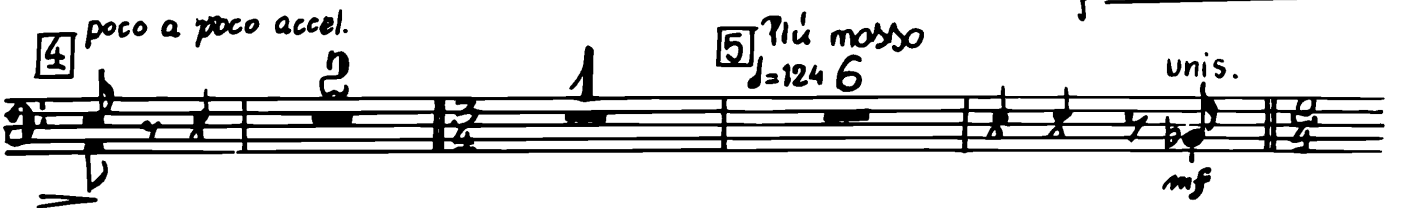
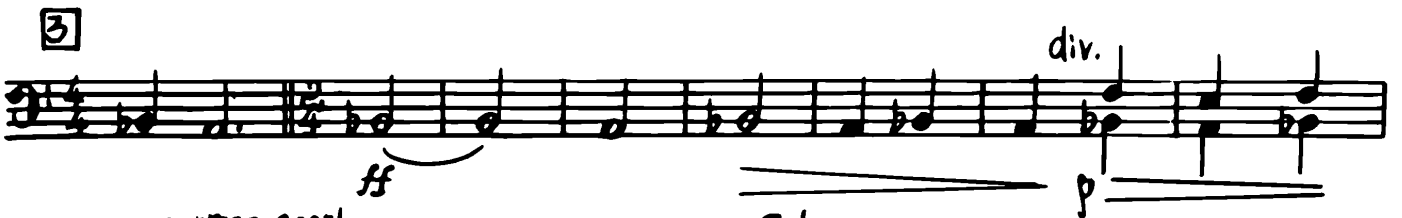


I KONCERT WIOŁONCZELOWY
 CELLO CONCERTO NO. 1

GRAŻYNA BACEWICZ
 (1909–1969)

I

Allegro non troppo $\text{♩} = 100$



Musical notation for measures 6 and 7. Measure 6 includes dynamics *mf*, *f*, *mf*, and *p*. Measure 7 is marked with a boxed number 7 and a fermata.

Musical notation for measures 8 and 9. Measure 8 starts with a boxed number 8 and a dynamic of *p*. Measure 9 includes a dynamic of *p*.

Musical notation for measure 9, including the tempo marking *rit.* and the instruction *[9] loco meno mosso*. A boxed number 9 is present.

Musical notation for measure 10, starting with a boxed number 10 and a dynamic of *p*.

Musical notation for measure 11, starting with a boxed number 11. Dynamics include *mf* and *p sub.*

Musical notation for measure 12, including the instruction *1 Solo arco* and a dynamic of *p*.

Musical notation for measures 12 and 13. Measure 12 includes *tutti pizz.* and a boxed number 12. Measure 13 includes *mf*, *f*, *cresc.*, and a boxed number 13. The instruction *accelerando* spans across these measures.

Musical notation for measure 14, ending with a dynamic of *f*.

(pizz.) 1 14 *Tempo I (♩ = 100)*
Più mosso 3 *ando*
 mf

2 15 3 1
 f

poco rit. 16 *Poco meno mosso*
 p 3 3 3 1 f

accelerando *Tempo I*
 cresc. ff

17
 cresc. più ff f p

f p f p p

18 3 19 1
 mf f

20 *accelerando* 21 *Molto più mosso*
 mf ♩ = 152 p

4

22 *div.* *unis.* 3
 f

[23] 2 *P* *f*

[24] *ff*

[25] *Meno mosso* *ff* *div. rit.* *cresc.*

Vc. solo *Cadenza*

[26] *Tempo II* *Energico* *f* 6

[27] 3 *P*

[28] 1 *P*

[29] *rit.* *Poco meno* 7 *Timp. 2 accel.*

[30] *Poco più* *Tr.* 1 3 1 *accelerando*

[31] *Più mosso* 9 [32] *v-la*

div. *mf* **1** **33** **3** *unis.* *f*

34 *Tempo I*

v

II

Andante tranquillo $\text{♩} = 60$

1 **2** **3** **4** **5** *p*

mf **1** *pp*

rit. **1** *a tempo* *pp*

2 *pizz.* *p marcato*

mf **1** **3** *pp*

2 **4** **1** *rit.* *a tempo* **1** **1**

1 rit. 1 2 rit. 1 a tempo 5 Cl. II 1

Fg. arco allargando 6 Poco più mosso

f cresc. p

accelerando 7 allargando a tempo

mf

8 Tempo I vc. pizz.

9 arco

p

pp dim.

III Finale

Allegro giocoso

ff 1 4 2 8

3 ff

1 4

ff

1 5 2

p

p 6 4

7 8 8 6 9 4 Viol. I 10 una meta

p leggiero

(una meta) *p* 2

11 11 12 3 tutti poco a poco rall. *ff*

13 *pp* div. unis. *pp*

14 Poco meno 3 15 8 16 8 *p*

Tempo I 17 4 18 8

19 *ff* 20 5

21 *ff*

22 *Un poco meno mosso* *f*

23 *f* *2* *cresc.*

rit. **24** *meno mosso* *1* *5*

ff

25 *9* **26** *accel.* *5* **27** *Tempo I* *Fl. I 5* **28** *Fl. 6* **29** *una meta* *p leggiero*

30 *2* **31** *9* *1* *tutti* *p*

p

32 *11* *rit.*

33 *Tempo II* *8* **34** *7* **35** *4* **36** *Ob. I 6* **37** *Archi 8*

Musical score for bass clef, measures 38-40. The score consists of four staves. Measure 38 starts with a *mf* dynamic. Measure 39 includes a *f* dynamic. Measure 40 ends with a *ff* dynamic. Fingerings are indicated by numbers 2 and 4 above notes. A slur is present under the final notes of measure 40.