

VIOLONCELLI.

P. HINDEMITH.

KONZERT

Лон. Гес. Библиотека
Музыка
№ 10260

für Horn und Orchester

Moderately fast (♩ = 88-92)

I.

Handwritten musical notation for the beginning of the piece. The first staff shows a melodic line in 6/8 time with various notes and rests. The second staff shows a bass line with rests and a 'V.S.' marking. There are some handwritten annotations like 'f' and 'V' above notes, and '|||' above rests.

2

6 a 3 V # V (A) V V V V # 7

a 3

mf cresc.

a 3 V (B) f

V V V V

V V V V (C) p

V V V V cresc.

mf f

V V V V (D) p mp

dim. pizz p

⑤ *pizz* *arco*

a 4

⑦

③

④

4 ⊕

mp *dim.*

pizz

ff *mp*

Very fast ($\text{♩} = 150$)
allegro *pizz*

p *pizz*

mf *f* **(A)** *arco*

(B) *pizz* *p*

pizz

Very slow (♩ = 56)

(A) arco 7

Handwritten musical notation for section A, first system. It consists of two staves. The first staff has a treble clef, a 3/8 time signature, and notes with accidentals. Dynamics include p, mf, mp, and p. The second staff has a bass clef and notes with accidentals. Dynamics include mf.

Handwritten musical notation for section A, second system. It consists of two staves. The first staff has a treble clef, a 3/8 time signature, and notes with accidentals. Dynamics include mf. The second staff has a bass clef and notes with accidentals. Dynamics include mf.

(B)

Handwritten musical notation for section B, first system. It consists of two staves. The first staff has a treble clef, a 4/8 time signature, and notes with accidentals. Dynamics include mf and f. The second staff has a bass clef and notes with accidentals. Dynamics include mf.

Handwritten musical notation for section B, second system. It consists of two staves. The first staff has a treble clef, a 7/8 time signature, and notes with accidentals. Dynamics include mf. The second staff has a bass clef and notes with accidentals. Dynamics include p.

Moderately fast (♩ = 72)

Handwritten musical notation for section B, third system. It consists of two staves. The first staff has a treble clef, a 7/8 time signature, and notes with accidentals. Dynamics include pp and mf. The second staff has a bass clef and notes with accidentals. Dynamics include mf.

(C)

Handwritten musical notation for section C, first system. It consists of two staves. The first staff has a treble clef, a 7/8 time signature, and notes with accidentals. Dynamics include p. The second staff has a bass clef and notes with accidentals. Dynamics include p.

(D)

Handwritten musical notation for section D, first system. It consists of two staves. The first staff has a treble clef, a 4/8 time signature, and notes with accidentals. Dynamics include mf. The second staff has a bass clef and notes with accidentals. Dynamics include mf.

Handwritten musical notation for section D, second system. It consists of two staves. The first staff has a treble clef, a 4/8 time signature, and notes with accidentals. Dynamics include mf. The second staff has a bass clef and notes with accidentals. Dynamics include p.

(E)

Handwritten musical notation for section E, first system. It consists of two staves. The first staff has a treble clef, a 6/8 time signature, and notes with accidentals. Dynamics include mf. The second staff has a bass clef and notes with accidentals. Dynamics include mf.

v.c!

8

pizz

pp

F

p scherzando

p

pp

Fant (♩ = 132)

pp

F

Handwritten musical score with multiple staves and tempo markings. The score includes various musical notations such as notes, rests, and dynamic markings.

Tempo markings and annotations include:

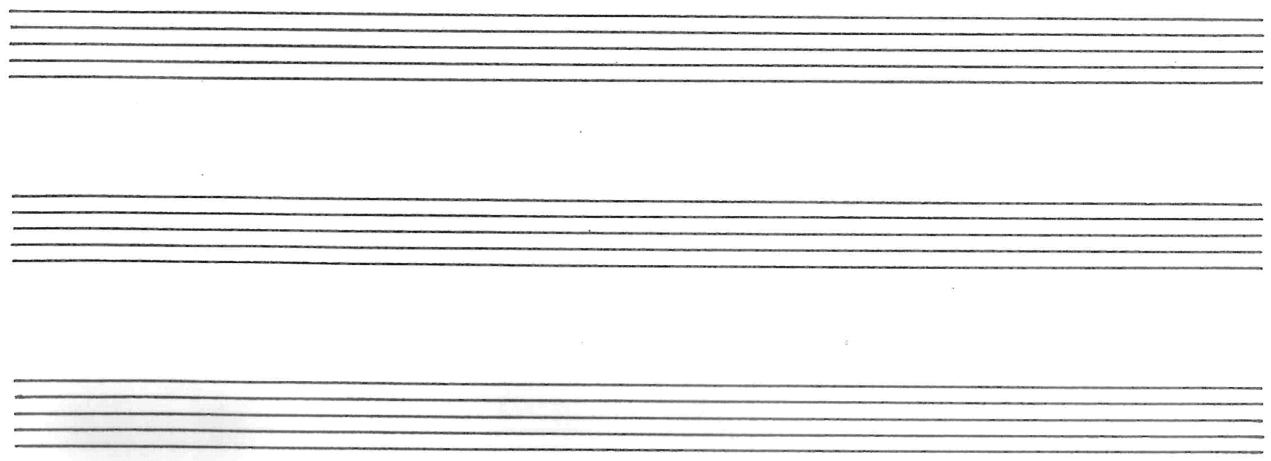
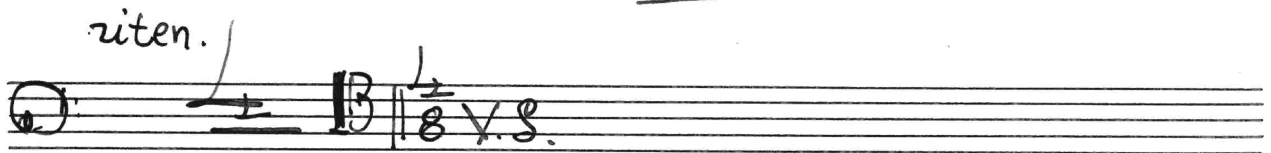
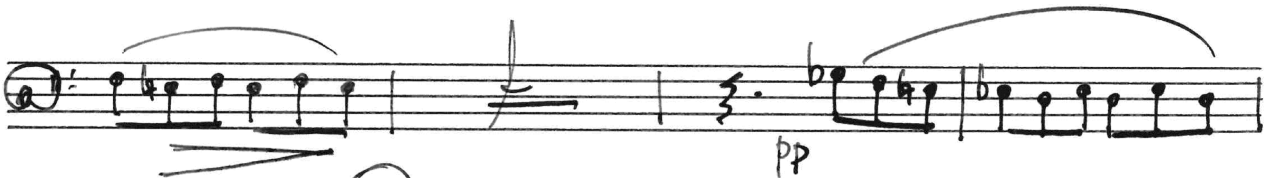
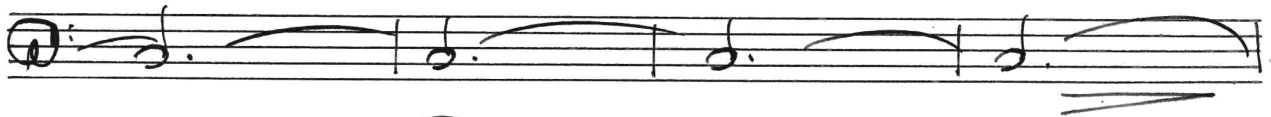
- ritard.** (ritardando)
- a tempo** ($\text{♩} = 132$)
- rit.** (ritardando)
- a tempo** (circled)
- un poco Lento** ($\text{♩} = 76$)
- piu Lento** ($\text{♩} = 4$)
- Libero** ($\text{♩} = 126$)
- Con Sord** (Con Sordina)

Dynamic markings include **f**, **pp**, **pp#**, **p**, and **fp**.

Other annotations include circled letters **K**, **L**, and **N**, and a circled **5**.

12.

Handwritten musical score for a single melodic line on a grand staff. The score consists of ten staves of music. It begins with a treble clef and a key signature of one sharp (F#). The first staff starts with a piano piano (pp) dynamic and a sharp sign. The music features various rhythmic values, including quarter, eighth, and sixteenth notes, often beamed together. There are several slurs and phrasing slurs throughout. Performance markings include 'pizz' (pizzicato) on the fourth staff, 'arco' (arco) on the eighth staff, and 'pp' (piano piano) on the ninth staff. There are also several circled letters: 'S' on the third staff, 'R' on the second staff, and 'T' on the sixth staff. The score ends with a double bar line on the tenth staff.



14 Very slow ($\text{♩} = 56$)