

M678230
1459

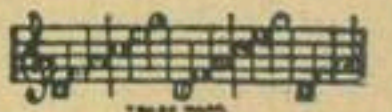
Beloved



Featured by
Guy Lombardo's Royal Canadians



By
GUS KAHN
and
JOE SANDERS



MADE IN
USA



CODE WORD
"BELOVED"

RS

Irving Berlin, Inc.
MUSIC PUBLISHERS
1607 Broadway New York

RS

BELOVED

Tune Ukulele or
BANJULELE BANJO

A D F# B

By GUS KAHN
and
JOE SANDERS

Valse moderato

Piano

Musical notation for the piano introduction, consisting of two staves (treble and bass clef) in 3/4 time with a key signature of one sharp (F#). The music begins with a forte (*f*) dynamic and features a waltz-like melody.

Continuation of the piano accompaniment, showing more of the waltz melody and bass line.

VOICE

Three ukulele chord diagrams corresponding to the notes A, D, and F# in the voice line.

Musical notation for the voice line, starting with a rest followed by the lyrics.

The breeze brought a stor - y of
I'm send - ing these ros - es and

Vamp

Musical notation for the piano accompaniment during the vocal phrase, featuring a vamp section with a piano (*p*) dynamic.

Five ukulele chord diagrams for the vocal phrase.

Musical notation for the voice line continuing the lyrics.

love to a rose, Whis - pered it low, at the
hop - ing they'll say, All that is deep in my

Musical notation for the piano accompaniment during the final vocal phrase.

THIS
NUMBER
can
be had
for your
Phonograph
or your
Player -
Piano

Ukulele Arr. by MAY SINGHI BREEN

Copyright 1928 by IRVING BERLIN Inc., 1607 Broadway, N.Y.C.
International Copyright Secured Made in U.S.A. All Rights Reserved

sum - mer day's close, Youth brought the
heart, dear, to - day, All that I've

rose to a beau - ti - ful miss,
known since the mo - ment we met,

She heard the dear lit - tle rose whis - per this.
All I am hop - ing you'll nev - er for - get.

CHORUS

Be - cause of you, the skies are

pf

blue. Be - lov - ed, Be - lov - ed,

Be - cause you smile it's all worth

while, Be - lov - ed, Be - lov - ed,

Be - cause we care this good -

bye, Could not mean love will

die, Where - e'er I go, I'll dream of

my Be - lov - ed, Be -

lov - ed. Be - lov - ed.