

Violoncelle

Bohuslav Martinů
(1890-1959)

DUO N^o. 2

für Violine und Cello

in D-Dur, H. 371

An Frau Trauti Mohr-Bally

Comp. Schönenberg-Frenkendorf, 28. Mai – 1. Juli 1958

Uraufführung (privat). Basel, 4. März 1962.

Hansheinz Schneeberger und Dieter Stähelin.

Uraufführung (öffentlich), Basel, Frühjahr 1963 (IGNM).

Hansheinz Schneeberger, violine und Dieter Stähelin, cello.



Edited by
Orfeo Mandozzi
2015

A Madame Trauti Mohr-Bally

Violoncelle

DUO N° 2

Edited by
Orfeo Mandozzi

für Violine und Cello in D-Dur, H. 371
Comp. Schöenberg-Frenkendorf, 28. Mai – 1. Juli 1958

Bohuslav Martinů
(1890-1959)

I

Allegretto ♩=80 (84)

f

6

meno f

10 **A**

f

14 *p* *f*

p

19 **B**

f *meno f*

24

27

(mf) *(p)*

34 **C**

p *mf*

41 **D**

p

45

p *mf*

49 **E**

f *f*

Measures 49-51: Bass clef, starting with a forte (*f*) dynamic. Measure 49 has a boxed letter 'E'. Measures 49 and 50 feature two 'V' (vibrato) markings above the notes. The music consists of eighth and sixteenth notes.

52

Measures 52-54: Bass clef. Measure 52 has a 'V' (vibrato) marking above the notes. The music continues with eighth and sixteenth notes.

55 **F**

f

Measures 55-59: Treble clef, starting with a forte (*f*) dynamic. Measure 55 has a boxed letter 'F'. The music features a mix of eighth and sixteenth notes with various accidentals.

60 **G**

Measures 60-64: Bass clef. Measure 60 has a boxed letter 'G'. The music continues with eighth and sixteenth notes.

65

tr *tr* *tr* *tr*

Measures 65-68: Treble clef. Measures 66-68 feature trills (*tr*) over eighth notes.

69 **H**

f

Measures 69-74: Treble clef. Measure 69 has a boxed letter 'H'. The music features a sixteenth-note pattern in the first part, followed by quarter notes. Measure 74 has a forte (*f*) dynamic.

75

Measures 75-79: Bass clef. The music continues with eighth and sixteenth notes.

80

Measures 80-85: Bass clef. The music features a mix of eighth and sixteenth notes.

86 **I**

f

Measures 86-91: Bass clef, starting with a forte (*f*) dynamic. Measure 86 has a boxed letter 'I'. The music consists of chords and eighth notes.

92

Measures 92-95: Bass clef. The music features a sixteenth-note pattern.

II

Adagio $\text{♩} = 66$ (72)

poco f cant.

mf

> p *pp*

p

p *mf*

poco f

f *p*

p

poco f

50

Measures 50-53: Bass clef, 2/4 time. Measure 50: quarter notes G2, A2, B2, C3, D3, E3, F3, G3. Measure 51: quarter notes G3, A3, B3, C4, D4, E4, F4, G4. Measure 52: quarter notes G4, A4, B4, C5, D5, E5, F5, G5. Measure 53: quarter notes G5, F5, E5, D5, C5, B4, A4, G4. Dynamics: *f*. Performance markings: slurs, accents, and hairpins.

54

Measures 54-56: Treble clef, 3/4 time. Measure 54: quarter notes G4, A4, B4, C5, D5, E5, F5, G5. Measure 55: quarter notes G5, F5, E5, D5, C5, B4, A4, G4. Measure 56: quarter notes G4, A4, B4, C5, D5, E5, F5, G5. Dynamics: *p*, *mf*. Performance markings: slurs, accents, and hairpins.

57

Measures 57-60: Bass clef, 2/4 time. Measure 57: quarter notes G2, A2, B2, C3, D3, E3, F3, G3. Measure 58: quarter notes G3, A3, B3, C4, D4, E4, F4, G4. Measure 59: quarter notes G4, A4, B4, C5, D5, E5, F5, G5. Measure 60: quarter notes G5, F5, E5, D5, C5, B4, A4, G4. Dynamics: *f*. Performance markings: slurs, accents, and hairpins.

61

Measures 61-67: Bass clef, 2/4 time. Measure 61: quarter notes G2, A2, B2, C3, D3, E3, F3, G3. Measure 62: quarter notes G3, A3, B3, C4, D4, E4, F4, G4. Measure 63: quarter notes G4, A4, B4, C5, D5, E5, F5, G5. Measure 64: quarter notes G5, F5, E5, D5, C5, B4, A4, G4. Measure 65: quarter notes G4, A4, B4, C5, D5, E5, F5, G5. Measure 66: quarter notes G5, F5, E5, D5, C5, B4, A4, G4. Measure 67: quarter notes G4, A4, B4, C5, D5, E5, F5, G5. Dynamics: *mf*. Performance markings: slurs, accents, and hairpins.

68

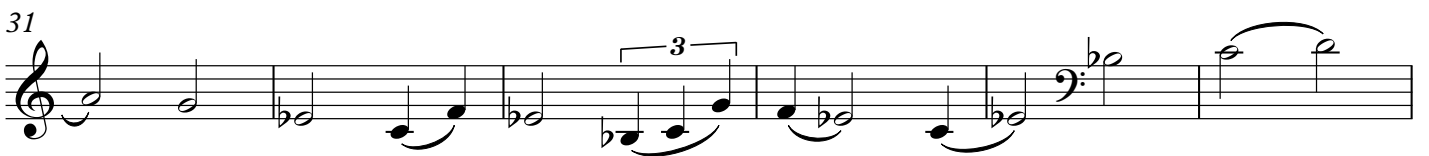
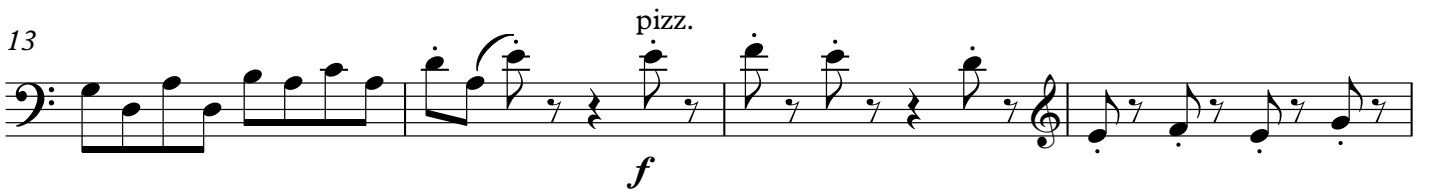
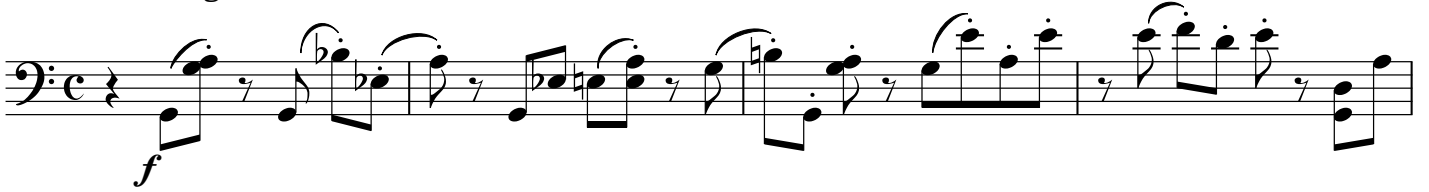
Measures 68-72: Bass clef, 2/4 time. Measure 68: quarter notes G2, A2, B2, C3, D3, E3, F3, G3. Measure 69: quarter notes G3, A3, B3, C4, D4, E4, F4, G4. Measure 70: quarter notes G4, A4, B4, C5, D5, E5, F5, G5. Measure 71: quarter notes G5, F5, E5, D5, C5, B4, A4, G4. Measure 72: quarter notes G4, A4, B4, C5, D5, E5, F5, G5. Dynamics: *mf*, *pp*. Performance markings: slurs, accents, and hairpins.

73

Measures 73-76: Bass clef, 2/4 time. Measure 73: quarter notes G2, A2, B2, C3, D3, E3, F3, G3. Measure 74: quarter notes G3, A3, B3, C4, D4, E4, F4, G4. Measure 75: quarter notes G4, A4, B4, C5, D5, E5, F5, G5. Measure 76: quarter notes G5, F5, E5, D5, C5, B4, A4, G4. Dynamics: *p*. Performance markings: slurs, accents, and hairpins.



III

Poco allegro $\text{♩} = 92$ 

42 **R**

Staff 42-45: Treble clef, starting with a piano (*p*) dynamic. The music consists of a series of eighth notes, some beamed together, with a fermata over the final measure.

46

Staff 46-49: Bass clef, featuring a sequence of eighth notes with various accidentals (flats and sharps) and slurs.

50 **S** *mf*

Staff 50-53: Treble clef, starting with a mezzo-forte (*mf*) dynamic. The music features a rhythmic pattern of eighth notes with rests, some beamed together.

54

Staff 54-57: Treble clef, continuing the rhythmic pattern of eighth notes with rests and slurs.

58 **T** *f*

Staff 58-63: Bass clef, starting with a forte (*f*) dynamic. The music features a sequence of eighth notes with various accidentals and slurs.

64

Staff 64-71: Bass clef, featuring a sequence of eighth notes with various accidentals and slurs, ending with a piano (*p*) dynamic.

72 **U**

Staff 72-80: Treble clef, featuring a sequence of eighth notes with various accidentals and slurs, ending with a piano (*pp*) dynamic and a fermata.

81 *f*

Staff 81-84: Bass clef, starting with a forte (*f*) dynamic. The music features a sequence of eighth notes with various accidentals and slurs.

85

Staff 85-88: Bass clef, featuring a sequence of eighth notes with various accidentals and slurs.

89 *f*

Staff 89-92: Treble clef, starting with a forte (*f*) dynamic. The music features a sequence of eighth notes with various accidentals and slurs.

92 **V** *pizz.*
f

96

100 **W** *arco*
poco f (begleitung)

104
f

110
p

115 *mf* **X**
mf *f*

119

123 **Y** *Più vivo*
f

127 *Vivo*
f

131 *Poco pesante*
f *f*