

Cello

A Simple Suite

I. GAVOTTE

C. Armstrong Gibbs

Allegretto

$\text{♩} = 120$

pizz.

7

mf arco

13

f *mf*

18

f *mf*

23

f arco

27

f **Fine** *mf*

32

p

37

B

41

mf **D.S. al Fine** *pizz.*

II. PIZZICATO STUDY

Allegro

♩=132



pizz.

7

f

13

A

mf

20

ff *f*

27

p *mf*

Fine

35

B

mf

43

50

pp

arco

rit.

D.S. al Fine
a tempo

pizz.

III. SLOW MINUET

♩=88

1

6

11

16

21

27

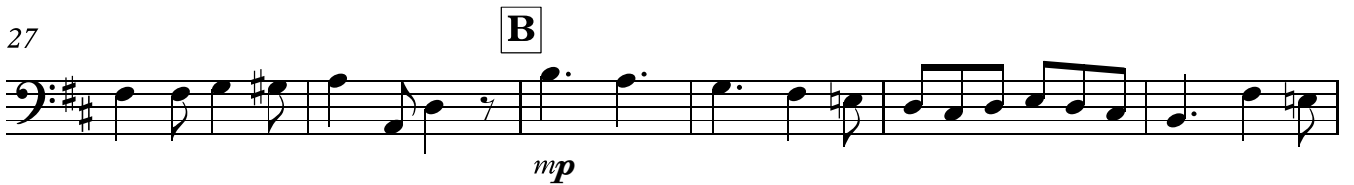
35

44

D.C. al Fine

IV. CHEERFUL DANCE

♩. = 112



39 **C**

45



50

55 **Molto vivace**

60



65

G.P.

pizz.



V. FUGATO

♩=120

1 *f*

6

10 A

15 *p*

20 *f*

24 B *p*

29 *f*

34 C *mp* *poco a poco cresc.*

39 *f* rit.

43 *ff* Slow, molto maestoso allarg.