

VIER LETZTE LIEDER

(Four Last Songs)

Trombone 1

RICHARD STRAUSS

VIER LETZTE LIEDER

(Four Last Songs)

RICHARD STRAUSS

FRÜHLING TACET

SEPTEMBER TACET

BEIM SCHLAFENGEHEN

Trombone 1

Andante 5 [A] 9 [B] 2 ^p Töne.2 3

(Fag.)

[C] Sehr ruhig 8 [D] 6 [E] *ppp cresc.*

dim. *ppp cresc.* *pp* < >

[G] 8 [H] 8 *pp*

Detailed description: This is the musical score for Trombone 1 in the 'BEIM SCHLAFENGEHEN' section. It consists of four staves of music in a 4/4 time signature with a key signature of two flats (B-flat and E-flat). The tempo is marked 'Andante'. The score includes various dynamics such as *ppp*, *pp*, *dim.*, and *cresc.*. There are also performance instructions like '(Fag.)' and '*pp* < >'. The music is divided into measures, with some measures containing boxed letters A through H. The first staff starts with a 5-measure rest, followed by notes in measures 9 and 2. The second staff has a 2-measure rest, followed by notes in measures 8, 6, and 3. The third staff has notes in measures 4 and 1. The fourth staff has notes in measures 8 and 8.

IM ABENDROT

Andante

2 3 4 5

fp

[A]

[B] 4

Detailed description: This is the musical score for Trombone 1 in the 'IM ABENDROT' section. It consists of three staves of music in a 4/4 time signature with a key signature of two flats. The tempo is marked 'Andante'. The first staff has notes in measures 2, 3, 4, and 5, with a dynamic of *fp*. The second staff has notes in measures 1 through 4, with a boxed letter 'A' in measure 3. The third staff has notes in measures 1 through 4, with a boxed letter 'B' in measure 3 and a 4-measure rest at the end.

Trombone 1

pp *b* *3* **C**
 (Fag.) (Cl.)

Fag. *pp* *pp*

D *calando*
 (Vi. Solo)

tempo primo
 (Cor.) *2* **E** *3* *2*

noch ruhiger
 (Cl.) *pp* *Fag.* **F** *p*

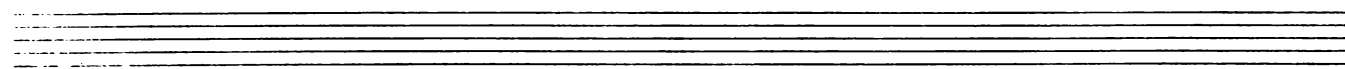
(con sord.) *4* **G** *immer langsamer*
 con. 1 *p*

rit. sehr langsam
 con sord. *dim.* *pp*

rit. sehr langsam
 con. 1 *pp*

3 **H** *6*

I *2*



VIER LETZTE LIEDER
(Four Last Songs)

Trombone 2

RICHARD STRAUSS

VIER LETZTE LIEDER

(Four Last Songs)

RICHARD STRAUSS

FRÜHLING

TACET

SEPTEMBER

TACET

BEIM SCHLAFENGEHEN

Trombone 2

Andante

5 A 9 B 2 3

(Fag.) p

2 C sehr ruhig D 6 E

ppp cresc.

dim. ppp cresc. pp

ppp pp

IM ABENDROT

Andante

2 3 4 5

fp

A

Trombone 2

3

B 4 *pp* **C** 3 (Fag.) (Cl.)

Fag. *p* *pp* 2

D calando 2 (Fl.) (Vi. Solo)

tempo primo **E** 3 2 (Cor.)

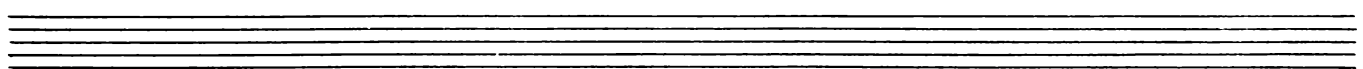
noch ruhiger *pp* **F** *p* (Cl.) (Fag.)

(con sord.) 4 **G** immer langsamer Cor. 1 *p*

rit. sehr langsam con sord. *pp* dim.

3 **H** 6 cor. 1 *p* rit. sehr langsam *pp*

I 2



VIER LETZTE LIEDER

(Four Last Songs)

Trombone 3

RICHARD STRAUSS

VIER LETZTE LIEDER

(Four Last Songs)

RICHARD STRAUSS

FRÜHLING

TACET

SEPTEMBER

TACET

BEIM SCHLAFENGEHEN

Trombone 3

Andante $\frac{4}{8}$

The score for Trombone 3 in 'Beim Schlafengehen' consists of five staves of music. The key signature is three flats (B-flat major/D-flat minor) and the time signature is 4/8. The tempo is marked 'Andante'. The score is divided into sections A through H, each with a measure number. Section A starts with a fermata. Section B includes a 'Fag. 1' marking. Section C is marked 'Sehr ruhig'. Dynamics include *cresc.*, *dim.*, and *ppp*. The piece concludes with a fermata.

A 5 B 7 C 8 D 6 E 6 F 4 G 8 H 8

cresc. *dim.* *ppp* *cresc.*

ppp *ppp* *ppp*

IM ABENDROT

Trombone basso

Andante

The score for Trombone basso in 'Im Abendrot' consists of three staves of music. The key signature is three flats (B-flat major/D-flat minor) and the time signature is 4/8. The tempo is marked 'Andante'. The score is divided into sections A and B, each with a measure number. Dynamics include *fp*. The piece concludes with a fermata.

2 3 4 5 A 4 B 4

3 **C**

pp (Fag.) (cl.)

Fag. *p*

pp *pp*

D calando 2

(Vi. solo)

tempo primo

(cor.) 2 3 2

E

noch ruhiger 2

(cl.) Fag. *pp* 7

F

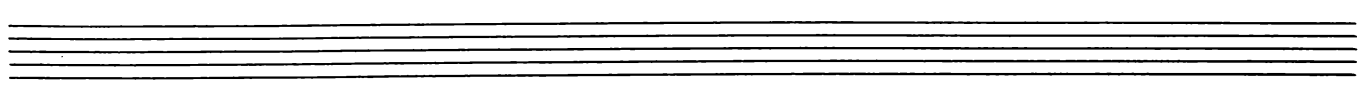
(con sord.) 4 **G** immer langsamer cor. 1

rit. sehr langsam con sord. *dim.* *pp*

3 **H** 6 rit. sehr langsam cor. 1 *pp*

(Fl.Ob.)

I 2



VIER LETZTE LIEDER

(Four Last Songs)

Tuba

RICHARD STRAUSS

VIER LETZTE LIEDER

(Four Last Songs)

RICHARD STRAUSS

FRÜHLING

TACET

SEPTEMBER

TACET

BEIM SCHLAFENGEHEN

Tuba

Andante

The musical score for the Tuba part of 'Beim Schlafengehen' consists of four staves. The first staff begins with a 4/8 time signature and a key signature of three flats. It features a series of notes with dynamic markings and includes handwritten annotations: 'A' in a box above the first measure, '9' above the second, 'B' in a box above the third, '(Fag.)' below the fourth, 'Tbnc. 3' below the fifth, and '3' above the sixth. The second staff starts with a 2/8 time signature and includes 'C' in a box above the first measure, 'Sehr ruhig' above the second, 'D' in a box above the third, '6' above the fourth, and 'E' in a box above the fifth. Dynamic markings 'ppp' and 'cresc.' are present. The third staff has a 2/8 time signature and includes 'F' in a box above the fourth measure, with 'dim.' and 'ppp' below the first measure, and 'cresc.' and 'pp' below the fourth. The fourth staff has a 2/8 time signature and includes 'G' in a box above the second measure, '8' above the third, 'H' in a box above the fourth, and '8' above the fifth, with 'ppp' below the first and 'pp' below the fifth.

IM ABENDROT

Andante

The musical score for the Tuba part of 'Im Abendrot' consists of three staves. The first staff begins with a 4/8 time signature and a key signature of three flats. It features a series of notes with dynamic markings and includes handwritten annotations: '2' above the second measure, '3' above the third, '4' above the fourth, and '5' above the fifth. The second staff includes 'A' in a box above the fourth measure. The third staff continues the melodic line.

Tuba

B 6 **C** 3

(Fag.) (Cl.)

Fag. *p*

pp $\bar{\sigma}$ $\bar{\sigma}$

D calando **2**

(Fl.)

tempo primo **E** 3 **2**

(cor.)

noch ruhiger

ci. *pp*

Fag.

F *p*

G immer langsamer

(censord) 5 cor. 1

rit. sehr langsam

dim. con sord.

pp

H 6 cor. 1 *p* rit. sehr langsam

(Fl.ob.) *pp*

I 2

